



Department of  
Education

**Shaping the future**

# Standalone bushfire plan 2023-2024

## Paraburdoo Primary School

May 2023



## Purpose

The *Standalone bushfire plan* document is a detailed plan of how your school is to prepare and respond to a catastrophic fire danger rating alert or to a bushfire event.

As principal, you must complete this template to have a plan in place to respond to a bushfire emergency. This plan is to be read in conjunction with information on Ikon to [prepare for bushfire season at your school](#).

All staff, students, contractors and visitors on the school or facility site are to follow this completed plan in the event of a bushfire emergency. All other emergencies are to be managed in accordance with the school's incident management plan, as per the [Incident management manual](#).

Complete and lodge your plan online by 31 August.

# Contents

<b>1</b>	<b>School details</b> .....	<b>3</b>
<b>2</b>	<b>Emergency response contact list</b> .....	<b>4</b>
	2.1 Important bushfire emergency contact sources .....	5
<b>3</b>	<b>School Response Team</b> .....	<b>6</b>
<b>4</b>	<b>Bushfire response telephone tree</b> .....	<b>7</b>
<b>5</b>	<b>Emergency equipment</b> .....	<b>8</b>
<b>6</b>	<b>Bushfire preparation checklist</b> .....	<b>9</b>
<b>7</b>	<b>Bushfire action plan maps</b> .....	<b>11</b>
	7.1 Onsite 'safer building location(s)' .....	11
	7.2 Offsite evacuation locations .....	12
	<b>Appendix A - Bushfire warning stages</b> .....	<b>13</b>
	<b>Appendix B - Procedures in the event of a sudden bushfire</b> .....	<b>14</b>
	Relocate to onsite 'safer building location' .....	14
	Offsite evacuation procedures .....	16
	<b>Appendix C - Pre-emptive (planned) closure procedures</b> .....	<b>18</b>
	Flow chart – Principal's response to Fire Behaviour Index of 75 (Extreme Fire Danger Rating) or greater .....	19
	<b>Appendix D – After-hours or school holiday procedures</b> .....	<b>20</b>

# 1 School details

To complete this plan, on the front cover of the document:

- insert your school name
- add the year for the new bushfire season
- add the date in the footer to show when the plan became active.

Enter information into the **grey** sections of this document, following the prompts in the square brackets where featured. You can add extra rows to tables where necessary.

When your plan is complete, follow the steps on Ikon to [lodge, update or access your standalone bushfire plan online](#).

School name (include name of co-located school or facilities if applicable)	Paraburdoo Primary School
School address	De Grey Road, Paraburdoo, WA, 6754
Education Region	Pilbara
Number of students	210 Paraburdoo Fire Station Paraburdoo Volunteer Fire Brigade
Number of students requiring extra support if evacuating	5 - see student risk management plans for offsite excursions (shared drive and student file paths)
Number of staff	35
Number of school sides bordered by bush	1
Names of major roads bordering school	Nickol Ave, De Grey Ave
School's site-specific alert, for example: <ul style="list-style-type: none"> <li>• siren/pause x 3</li> <li>• continuous handbell</li> <li>• continuous siren or short whistle blasts</li> </ul>	Continuous sounding of evacuation alarm on PA system. If no electricity, constant blasts of a sports whistle/battery operated loudspeaker.

Plan prepared by (principal's name)	Caragh Livingstone
Date prepared or reviewed	Prepared August 2023

## 2 Emergency response contact list

Enter the contact details into the following table:

Organisation	Details	Phone number / website
Local police (for example, name of nearest police station)	Paraburdoo Police (may divert to Karratha if station is unmanned) Tom Price Police	08 9159 8600 08 9188 022
Local hospital (name of nearest hospital or medical emergency facility)	Paraburdoo Hospital Paraburdoo Medical Clinic Tom Price Hospital Tom Price Medical Clinic	(08) 5159 8222 (08) 9189 5069 (08) 9159 5222 (08) 9189 1901
Department of Fire and Emergency Services regional contact	Paraburdoo Volunteer fire and Rescue Tom Price Fire and Rescue	000 9189 6111 9188 1333
Local fire brigade (for example, name of nearest fire station)	Paraburdoo Volunteer fire and Rescue	000
Local bushfire brigade (for example name of nearest station)	Paraburdoo Volunteer fire and Rescue	000
Bus contractors (ready for pre-emptive closure or offsite evacuation)	NA – buses not available in location and offsite evacuation is working distance for all students and staff, including those requiring support.	
Electricity provider - in the case of a power outage (for example, Horizon Power, Western Power)	Pilbara Utilities	1800 992 777 (option 5)
State emergency service (if known)	Tom Price SES	132 500
Poisons information (where relevant)	WA Poisons Information Centre	131 126
Director of Education name	Cheryl Parkin	0427 420 270

## 2.1 Important bushfire emergency contact sources

### DIAL 000 in an emergency

- **Emergency WA**
  - Website: <https://www.emergency.wa.gov.au/>
  
- **Department of Fire and Emergency Services**
  - Information line: 13 33 37
  - Website: <https://www.dfes.wa.gov.au/>
  - Facebook: <https://www.facebook.com/dfeswa>
  - Twitter: [https://twitter.com/dfes\\_wa](https://twitter.com/dfes_wa)
  
- **ABC Emergency**
  - Website: <https://www.abc.net.au/emergency>
  
- **Local radio**
  - ABC local radio: Find your local radio station at <https://www.abc.net.au/local>
  - 6PR: Listen online at <https://www.6pr.com.au/listen-live/> or tune into AM 882 and Digital Radio

### 3 School Response Team

Enter the names and mobile numbers of the staff responsible for carrying out emergency procedures during a bushfire event. The principal coordinates the incident response to onsite or offsite locations (refer to Appendix B & C procedures).

Examples of suggested duties include:

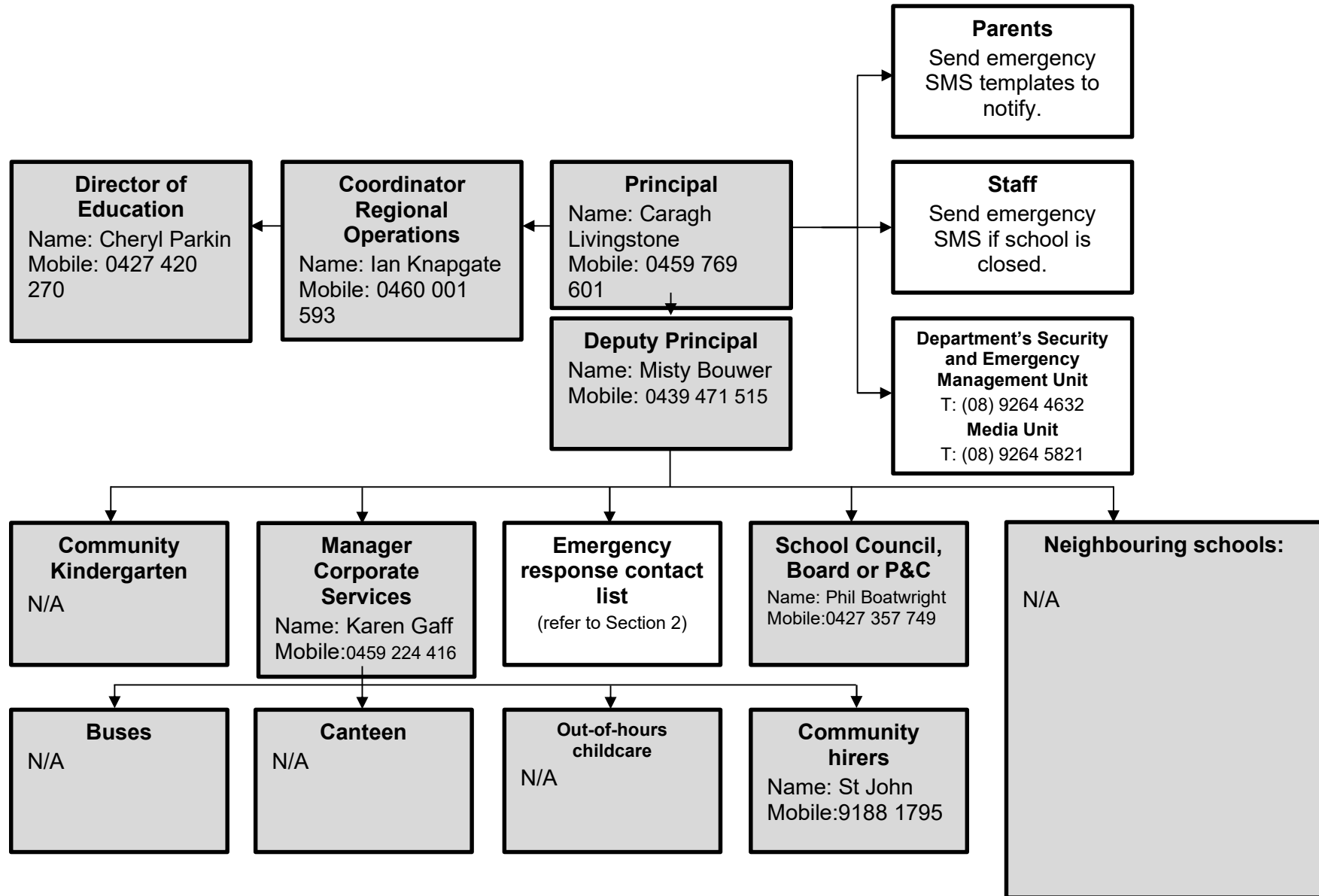
- fire warden duties
- checking all rooms
- keeping a copy of school registers for roll call
- monitoring the bushfires warnings stages (as per Appendix A)
- send out text alerts to parents
- liaising with emergency services, community members, parents and carers.

Consider making cards that outline the duties of the school response team. This can be useful to hand out at the start of the incident.

Position	Staff name	Duties	Mobile number
Principal	Caragh Livingstone	<ol style="list-style-type: none"> <li>1. Physical alert (siren sounding or whistle blowing)</li> <li>2. Physically check (Block A and B and ECE 1 and 2 rooms for persons.</li> </ol>	0459 769 601
Deputy Principal	Misty Bower Danielle Smith	<ol style="list-style-type: none"> <li>1. Fire Warden duties</li> <li>2. Liaise with school officer for registers and check all staff, students and visitors are accounted for at muster point.</li> </ol>	
Manager Corporate Services		<ol style="list-style-type: none"> <li>1. Continue to sound siren</li> <li>2. Contact Fire and Emergency Services</li> <li>3. Send text alerts to alert parents</li> </ol> Monitor Bushfire warning stages	
Teachers		Teachers and allied professionals evacuate students to muster points. All teachers carry daily attendance register. Specialist teachers go with class if emergency occurs during their lesson time and meet classroom teacher at muster point.	
Accredited first aid officers		Go to muster point and provide aid as needed.	
Other (if applicable)	School Officer	Keep copy of school registers (including daily attendance list, staff timetables and visitor register) to ensure all staff and students are accounted for at Muster point.	

## 4 Bushfire response telephone tree

Complete the information boxes with the contact details for the relevant stakeholders.





## 5 Emergency equipment

Identify the location and the type of emergency equipment at your site.

<b>Equipment</b>	<b>Details</b> (include location/s, date checked and any other comments)
Evacuation kit (section 7 of the school <a href="#">Incident Management Plan</a> ).	Administraton block
First aid kit(s) - include masks in case some students are susceptible to smoke.	Administration block
Emergency alert system and communication equipment, for example: <ul style="list-style-type: none"> <li>• mobile telephones (charged)</li> <li>• hand-operated fire alarm (portable siren)</li> <li>• megaphone/loud hailer</li> <li>• portable CB radios</li> <li>• spare batteries.</li> </ul>	Repeated Siren, repeated whistle blasts. Handheld battery-operated loudspeakers located in medical Room, Front Office.
Registers for: <ul style="list-style-type: none"> <li>• students</li> <li>• staff</li> <li>• visitors.</li> </ul>	Staff and visitor Register available in Front Office. School Officer prints and brings list of daily registers to account for all people on premises, excluding St John Ambulance (hirers) who must be contacted via phone.
Standalone bushfire plan: <ul style="list-style-type: none"> <li>• hard copy in the evacuation kit</li> <li>• copy saved to an online platform for access offsite.</li> </ul>	Hard copy in administration block and online saved to One Note

## 6 Bushfire preparation checklist

<p>Principals must:</p> <ul style="list-style-type: none"> <li>• complete this bushfire preparation checklist annually</li> <li>• inform all staff members of their responsibilities.</li> </ul> <p>You can provide details of your preparation activities in the comments.</p>		
Management activities	☑ or N/A	Comments
The annual review of the Standalone bushfire plan has been completed before the start of bushfire season.	Yes	9 August 2023
<p>Consulted and received advice in preparing your Standalone bushfire plan from any of the following(as relevant):</p> <ul style="list-style-type: none"> <li>• local Emergency Services</li> <li>• Department of Fire and Emergency Services</li> <li>• Department of Biodiversity, Conservation and Attractions – Parks and Wildlife Service</li> <li>• local volunteer fire brigade</li> <li>• WA Police Force</li> <li>• local emergency management committee (LEMC) or local government representative</li> <li>• community emergency services manager, if there is one for the area.</li> </ul>	Yes	
<p>Staff have been made aware of the Standalone bushfire plan through:</p> <ul style="list-style-type: none"> <li>• staff meetings</li> <li>• staff bushfire induction session that includes:                             <ul style="list-style-type: none"> <li>– an overview of the Standalone bushfire plan</li> <li>– how to turn off evaporative air conditioner units, the location of switches</li> <li>– how to close roof vents</li> <li>– the types of <a href="#">bushfire warnings</a> issued by the Department of Fire and Emergency Services and the <a href="#">Emergency Alert</a> telephone warning system</li> <li>– to direct bushfire media enquiries to the Department’s media unit (08) 9264 5821.</li> </ul> </li> </ul>	Yes	Shared via staff memo

<p>Students and parents or carers have been made aware of the Standalone bushfire plan through:</p> <ul style="list-style-type: none"> <li>• key bushfire safety messages incorporated into the curriculum</li> <li>• newsletters</li> <li>• school information booklet (include actions and procedures)</li> <li>• school website.</li> </ul>	<p>Yes</p>	<p>Shared via website &amp; newsletter</p>
<p>Communication plans are in place:</p> <ul style="list-style-type: none"> <li>• Emergency response contact list completed (section 2).</li> <li>• Bushfire response telephone tree completed (section 4).</li> <li>• communication templates for sample emergency text message, newsletter content and school notice text are complete (refer to Appendix D).</li> </ul> <p>Contact lists for staff and parents must be current.</p>	<p>Yes</p>	
<p>Emergency equipment available and checked (section 5):</p> <ul style="list-style-type: none"> <li>• evacuation kit checked at least once per term</li> <li>• emergency warning or alert system works</li> <li>• emergency communications equipment available</li> <li>• first aid kit(s) available</li> <li>• registers for students, staff and visitors readily accessible for roll call.</li> </ul>	<p>Yes</p>	
<p>Practise drills moving to your onsite 'safer building location(s)':</p> <ul style="list-style-type: none"> <li>• before the start of the bushfire season</li> <li>• at least once per term during the bushfire season.</li> </ul> <p>You must do at least 2 drills per year.</p>	<p>Yes</p>	
<p>The asset protection zone, which is a minimum distance of 20 metres surrounding the main school buildings, is checked and is:</p> <ul style="list-style-type: none"> <li>• clear of all rubbish, long dry grass, bark, flammable and combustible materials, including leaf litter and unused piles of mulch</li> <li>• maintained routinely throughout the year.</li> </ul> <p>For information on the asset protection zone, refer to <a href="#">Prepare for bushfire season at your school</a> on Ikon.</p>	<p>Yes</p>	<p>Regular maintenance on school and shire property by respective entities.</p>

## 7 Bushfire action plan maps

### 7.1 Onsite 'safer building location(s)'

Do not use an open area such as a school oval or non-enclosed building that may expose people to heat or other conditions.

Insert your school map and make sure it is marked with:

- the onsite 'safer building location(s)'. Include the name of the building, such as 'library'
- routes to access the location
- fire hydrants
- electrical switchboards
- phones and communication board
- first aid kits
- evacuation kits
- any other relevant details.

Information to help select your offsite evacuation location and a sample map is available on Ikon in [Prepare for bushfire season at your school.](#)

<p style="text-align: center;"><b>[insert school map]</b></p> <p style="text-align: center;"><b>SCHOOL MAP</b></p>	<p><b>Emergency, dial 000</b></p> <p><b>Primary action:</b> Determine if the bushfire is a threat to the school. Monitor official sources listed in section 2.</p> <p><b>Secondary action:</b> Refer to Appendix B for the procedures to relocate to onsite 'safer building location(s)'.  Library</p>
	<p>Map last updated: Feb 2023</p>

## 7.2 Offsite evacuation locations

Insert the school site map and make sure it is marked with:




- an assembly area
- 2 offsite evacuation locations. These locations cannot be a park, reserve, oval or other open space that may expose people to heat or other conditions.
- suitable routes to access the 2 locations.

Information to help select your offsite evacuation location and a sample map is available on Ikon in [Prepare for bushfire season at your school](#).

	<p><b>Emergency, dial 000</b></p> <p><b>Primary action:</b> Determine if the bushfire is a threat to the school. Monitor official sources listed in section 2.</p> <p><b>Secondary action:</b> Refer to Appendix B for the procedures to Relocate to an offsite evacuation location</p>
	<p>Paraburadoo shopping centre, Ashburton Avenue, Paraburadoo</p> <p>Paraburadoo Community Hub (on accessible days), Anzac Rd, Paraburadoo</p> <p>Both are accessible on foot with multiple possible routes</p>
	<p>Map last updated: August 2023</p>

## Appendix A - Bushfire warning stages

Emergency services communicate information in a number of ways during a bushfire event. Use these warnings to understand when your need to activate your bushfire procedures (refer to Appendix B).

<b>Bushfire warning stages</b>	
<p><b>ADVICE</b></p> 	<p><b>A fire has started, be aware and keep up to date.</b></p> <p>This is general information to keep principals informed and up to date with developments.</p> <p>Principals must:</p> <ul style="list-style-type: none"> <li>• turn off evaporative air conditioners and ensure roof vents are closed.</li> <li>• check and patrol the school regularly for bushfire activity, paying particular attention to the evaporative air conditioners.</li> </ul>
<p><b>WATCH AND ACT</b></p> 	<p><b>There is a possible threat to lives and property. Conditions are changing.</b></p> <p>Principals must prepare to:</p> <ul style="list-style-type: none"> <li>• evacuate; or</li> <li>• move students, staff and visitors to their pre-determined onsite 'safer building location'. They must not be moved to an open area.</li> </ul> <p>Evacuation orders are:</p> <ul style="list-style-type: none"> <li>• issued by the Incident Controller or Emergency Services if required.</li> <li>• relayed via official sources such as <a href="#">Emergency WA</a>.</li> </ul> <p>It is vital that the principal:</p> <ul style="list-style-type: none"> <li>• accesses bushfire information from official sources</li> <li>• makes an informed decision to stay onsite or evacuate offsite based on advice from the Incident Controller or Emergency Services.</li> </ul>
<p><b>EMERGENCY</b></p> 	<p><b>A school is in danger as its area will be impacted by fire. Take immediate action to survive.</b></p> <p>The principal will be advised whether staff, students and visitors can leave the area or if they must shelter where they are as the fire burns through the area.</p> <p>A siren, called the State Emergency Warning Signal (<a href="#">SEWS</a>), may accompany an emergency warning.</p> <p>Evacuation orders are:</p> <ul style="list-style-type: none"> <li>• directed by the Incident Controller or Emergency Services.</li> <li>• relayed via official sources, such as <a href="#">Emergency WA</a>.</li> </ul> <p>It is vital that the principal:</p> <ul style="list-style-type: none"> <li>• accesses bushfire information from official sources</li> <li>• makes an informed decision to stay onsite or evacuate offsite based on the advice.</li> </ul>
<p><b>ALL CLEAR</b></p>	<p><b>The danger has passed, and the fire is under control, but stay alert in case the situation changes.</b></p> <p>It may not be safe to return to school yet.</p>

## Appendix B - Procedures in the event of a sudden bushfire

### Relocate to onsite ‘safer building location’

You may be instructed to relocate to your onsite ‘safer building location(s)’. Do not use an open area such as a school oval or non-enclosed building.

Initiate this procedure if either of the following occurs:

- a ‘Watch and Act’ or ‘Emergency Warning’ alert is issued on the [Emergency WA](#) website (refer to Appendix A for details about the alerts)
- instruction from the Department of Fire and Emergency Services, Emergency Services or your Director of Education.

Follow these procedures to relocate to the onsite safer building location(s).

Action	Notes (if required)
<p>Dial 000 for emergency services and request fire brigade.</p> <p>When connected to Department of Fire and Emergency Services, advise:</p> <ul style="list-style-type: none"> <li>• your school name and address</li> <li>• the fire situation</li> <li>• how many students and staff are being impacted</li> <li>• if moving to a ‘safer building location’ and where it is located</li> <li>• if anyone requires medical attention</li> <li>• CB radio channel, if being used.</li> </ul> <p>Remain in contact with the Department of Fire and Emergency Services.</p> <p>Monitor official bushfire emergency information contact sources in section 2.1.</p>	
<p>Activate your school response team to carry out their responsibilities (section 3).</p>	
<p>Use your emergency response contact list to contact stakeholders (section 2).</p>	
<p>Follow your bushfire response telephone call tree (section 4) to communicate with the school community.</p> <p>Ensure parents receive emergency text message alerts to:</p> <ul style="list-style-type: none"> <li>• inform them of relocation</li> <li>• keep them updated (use the emergency text message alert templates, refer to <a href="#">Manage bushfire incident communications</a> on Ikon).</li> </ul> <p>Parents must not collect students until instructed.</p>	

<p>Confirm:</p> <ul style="list-style-type: none"> <li>• evaporative air conditioners are turned off</li> <li>• all building roof vents, windows and doors are closed before anyone enters the onsite safer building location(s).</li> <li>• where possible and safe to do so, relocate vehicles or other combustible items (school bags, rubbish bins etc) at least 20 metres from safer building locations.</li> <li>• monitor embers for possible ignition.</li> </ul>	
<p>Take emergency equipment (section 5):</p> <ul style="list-style-type: none"> <li>• registers for students, staff and visitors</li> <li>• evacuation kit</li> <li>• water</li> <li>• mobile phones (charged)</li> <li>• student medication</li> </ul>	
<p>Sound the school emergency warning or alert system.</p>	
<p>Follow advice from the incident controller, emergency services, the Manager Security and Emergency Management or the director of education to move to the onsite safer building location(s) (section 7.1)</p> <p>Students and staff must remain in classrooms unless they are directed to move to an onsite safer building location.</p>	
<p>Check student, staff and visitor registers after moving to an onsite safer building location (roll call). Advise the police if anyone is missing.</p> <p>You must give special consideration to students with known respiratory conditions.</p>	
<p>Wait for emergency services to arrive or the incident controller to provide you with information.</p> <p>Ongoing advice will also be provided by the Manager, Security and Emergency Management or the director of education.</p> <p>Continue to monitor official bushfire information sources listed in section 2.1.</p>	
<p>The Department will consult the incident controller or emergency services and notify you when it is safe to return to classrooms or for students to be collected by parents. You will receive advice from the director of education.</p>	



## Offsite evacuation procedures

You may be instructed to relocate to your offsite evacuation location.

Initiate your offsite evacuation procedure if a ‘watch and act’ or ‘emergency warning’ bushfire warning alert on the [Emergency WA](#) website is invoked (refer to the bushfire warnings listed in Appendix A) and you receive direction from either:

- Department of Fire and Emergency Services, incident controller or emergency services or
- the director of education.

Follow these procedures if you need to evacuate to an offsite evacuation location during a bushfire event.

Action	Notes (if required)
<p>Dial 000 for emergency services and request fire brigade.</p> <p>When connected to Department of Fire and Emergency Services, advise:</p> <ul style="list-style-type: none"> <li>• your school name and address</li> <li>• the fire situation</li> <li>• how many students and staff are being impacted</li> <li>• if moving to a ‘safer building location’ and where it is located</li> <li>• if anyone requires medical attention</li> <li>• CB radio channel, if being used.</li> </ul> <p>Remain in contact with Department of Fire and Emergency Services and your director of education.</p> <p>Monitor official bushfire emergency information contact sources listed in section 2.1.</p>	
<p>Activate your School response team to carry out their responsibilities (section 3).</p>	
<p>Refer to the Emergency response contact list to contact stakeholders (section 2).</p>	
<p>Follow advice from the emergency services or the Manager, Security and Emergency Management or the director of education to decide which of the school’s offsite evacuation location(s) is the safest to use (section 7.2).</p>	
<p>If safe to do so, muster at the identified assembly area where staff, students and visitors can gather to prepare for offsite evacuation.</p> <p>Use an alternative assembly area if your first identified assembly area is unsafe.</p> <p>Note: Students and staff must remain in classrooms unless they are directed to move to an onsite safer building location and/or onsite assembly area.</p>	

<p>Follow the Bushfire response telephone call tree to communicate with the school community (section 4).</p> <p>Ensure parents and carers receive emergency SMS alerts to:</p> <ul style="list-style-type: none"> <li>• inform them of relocation</li> <li>• keep them updated (use the emergency text message alert templates, refer to <a href="#">Manage bushfire incident communications</a> on Ikon).</li> </ul> <p>Note: Parents must not collect students until instructed.</p>	
<p>Confirm:</p> <ul style="list-style-type: none"> <li>• evaporative air conditioners are turned off</li> <li>• building roof vents and doors are closed.</li> </ul>	
<p>Take emergency equipment (section 5):</p> <ul style="list-style-type: none"> <li>• registers for students, staff and visitors</li> <li>• evacuation kit</li> <li>• mobile phones (charged).</li> <li>• student medication.</li> </ul> <p>Sound the school emergency warning or alert system.</p>	
<ul style="list-style-type: none"> <li>• Notify bus operators</li> <li>• Notify other contractors scheduled to visit the site</li> <li>• Move all students, staff and visitors from the assembly area to the offsite evacuation location.</li> </ul>	<p>No bus operators Contact St John Contact Shire or IGA, depending on evacuation point selected to advise of students arriving on site</p>
<p>Check registers after evacuating staff, students and visitors (roll call). Advise the police if anyone is missing.</p>	
<p>The Manager, Security and Emergency Management or the director of education will provide ongoing advice. Continue to monitor official bushfire information sources listed in section 2.1.</p>	
<p>The Department will consult the incident controller or emergency services and notify you when it is safe to return to classrooms or for students to be collected by parents. You will receive advice from the director of education.</p>	

## Appendix C - Pre-emptive (planned) closure procedures

You may be instructed to pre-emptively close your school due to a fire behaviour index of 75 (extreme fire danger) or greater being forecast.

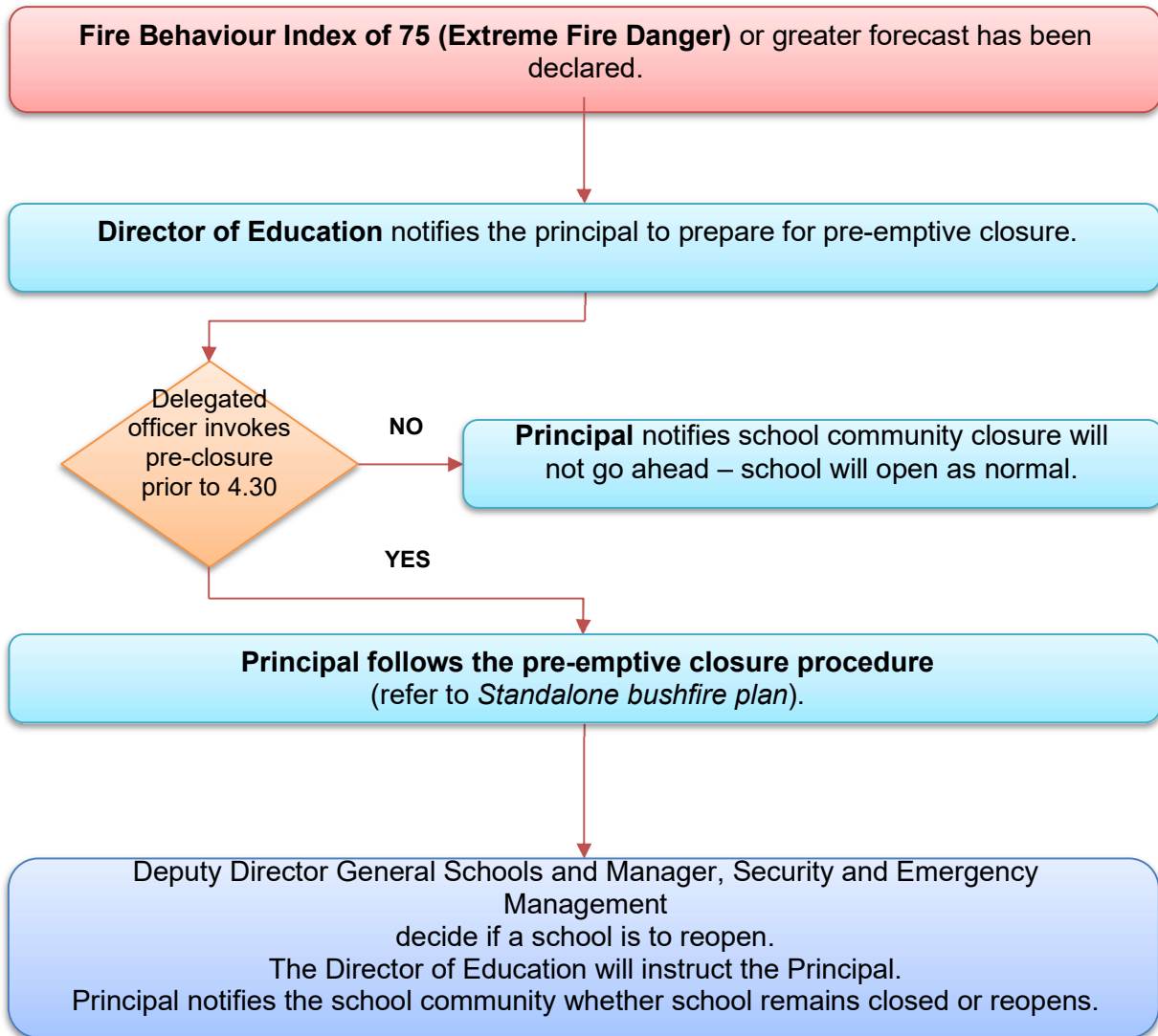
Initiate the closure procedure if you receive advice from the director of education or the Security and Emergency Management unit.

Follow these procedures for a planned school closure.

Action	Notes (if required)
Monitor official bushfire emergency information contact sources listed in section 2.1.	
Activate your School response team to carry out their responsibilities (section 3).	
<p>Communicate the pre-emptive closure, continued closure or school reopening:</p> <ul style="list-style-type: none"> <li>• use your Emergency response contact list to contact stakeholders (section 2)</li> <li>• use your Bushfire response telephone tree (section 4)</li> <li>• use communication templates in <a href="#">Manage bushfire incident communications</a> for SMS, social media posts and Connect notices to keep the school community informed</li> <li>• place the notice of temporary closure on external school access points and on the school website.</li> </ul> <p>Note: Contact lists for staff, parents and carers must be current.</p>	
<p>Confirm:</p> <ul style="list-style-type: none"> <li>• windows and doors are closed</li> <li>• evaporative air conditioners are turned off</li> <li>• roof vents closed</li> <li>• money is removed from the school premises</li> <li>• expensive items of equipment secured.</li> </ul>	There are no evaporative air conditioners on site
<p>Secure school premises and activate security system.</p> <p>Before departing, email <a href="mailto:AssetPlanningServices.SecurityEM@education.wa.edu.au">AssetPlanningServices.SecurityEM@education.wa.edu.au</a> or call 9264 4632 to confirm:</p> <ul style="list-style-type: none"> <li>• all security systems armed</li> <li>• site is secure.</li> </ul>	
When the pre-emptive closure is cancelled, remove the notice of temporary closure from external school access points.	

Refer to the following Flow chart – Principal's response to fire behaviour index of 75 (extreme fire danger) or greater forecast.

### Flow chart – Principal’s response to Fire Behaviour Index of 75 (Extreme Fire Danger Rating) or greater



## Appendix D – After-hours or school holiday procedures

You may be instructed to keep your school closed during the school holidays or after hours during a bushfire event.

Initiate the below procedure if both of the following occur:

- A 'Watch and act' or 'Emergency warning' bushfire warning alert on the [Emergency WA](#) website is invoked (refer to the bushfire warnings listed in Appendix A)  
AND
- Direction received from the Deputy Director General, Schools or the Manager, Security and Emergency Management. The director of education will relay the decision to you.

Follow these procedures if a bushfire starts during the school holidays or after hours.

Action	Notes (if required)
Remain in contact with your director of education and monitor official bushfire emergency information contact sources listed in section 2.1.	During school holidays, nominate a staff member who will remain in town to act as contact person and inform principal if principal is not in the area.
Use your emergency response contact list to contact stakeholders (refer to section 2).	
Follow the bushfire response telephone call tree to communicate with the school community.  Send parents and carers and staff emergency text message alerts to inform them of the school closure. To access sample SMS text, refer to <a href="#">Manage bushfire incident communications</a> .	
Work with the director of education to seek alternative school and transport arrangements (if required).	
The Department's Media Unit and Incident Support Unit uses media outlets and <a href="#">Emergency WA</a> to make public announcements of: <ul style="list-style-type: none"> <li>• the school closure</li> <li>• temporary alternative accommodation.</li> </ul>	
The Department will consult the incident controller or emergency services and notify you when it is safe for the school to reopen. You will receive advice from the director of education or the Manager, Security and Emergency Management.	
Send parents, carers and staff emergency text message alerts to inform them when school can reopen.	